



ENERGYSOURCE  
**MINERALS**



An  
Opportunity  
for  
Imperial Valley

# PROJECT ATLAS

---

## OUR GOAL

**Creating the cleanest, most sustainable lithium production facility in the world to enable the transition to EV vehicles.**

# PROJECT OVERVIEW

**Project ATLiS**  
Utilizing the  
existing geothermal  
plant outside of  
Calipatria to  
process lithium out  
of the geothermal  
brine deep under  
Imperial County.



# PROJECT ATLiS TIMELINE



# PROJECT ATLIS CAPACITY

---

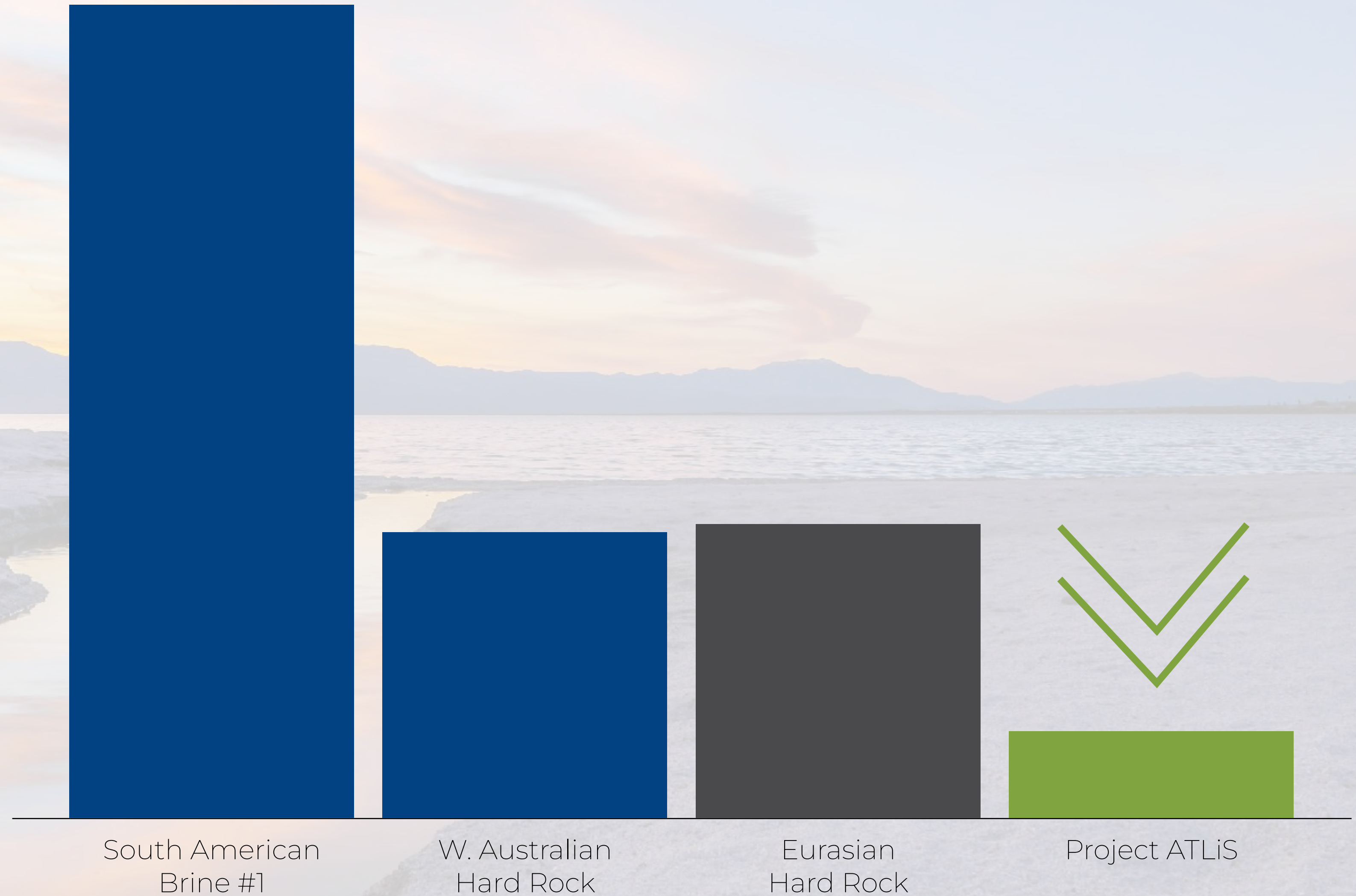
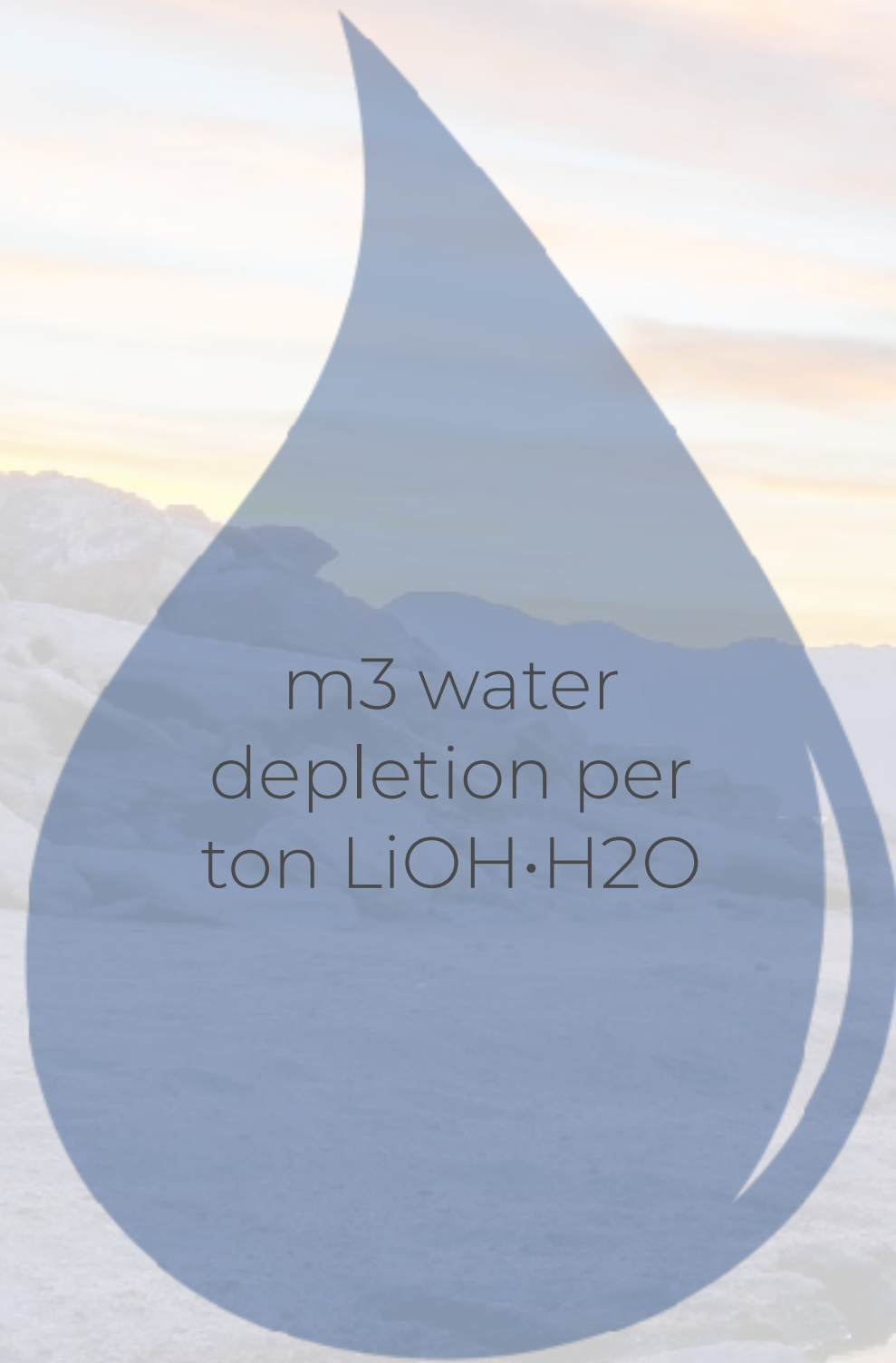
20,000 metric tonnes of lithium per year.

**20,000  
metric  
tonnes =  
500,000 EV  
batteries**



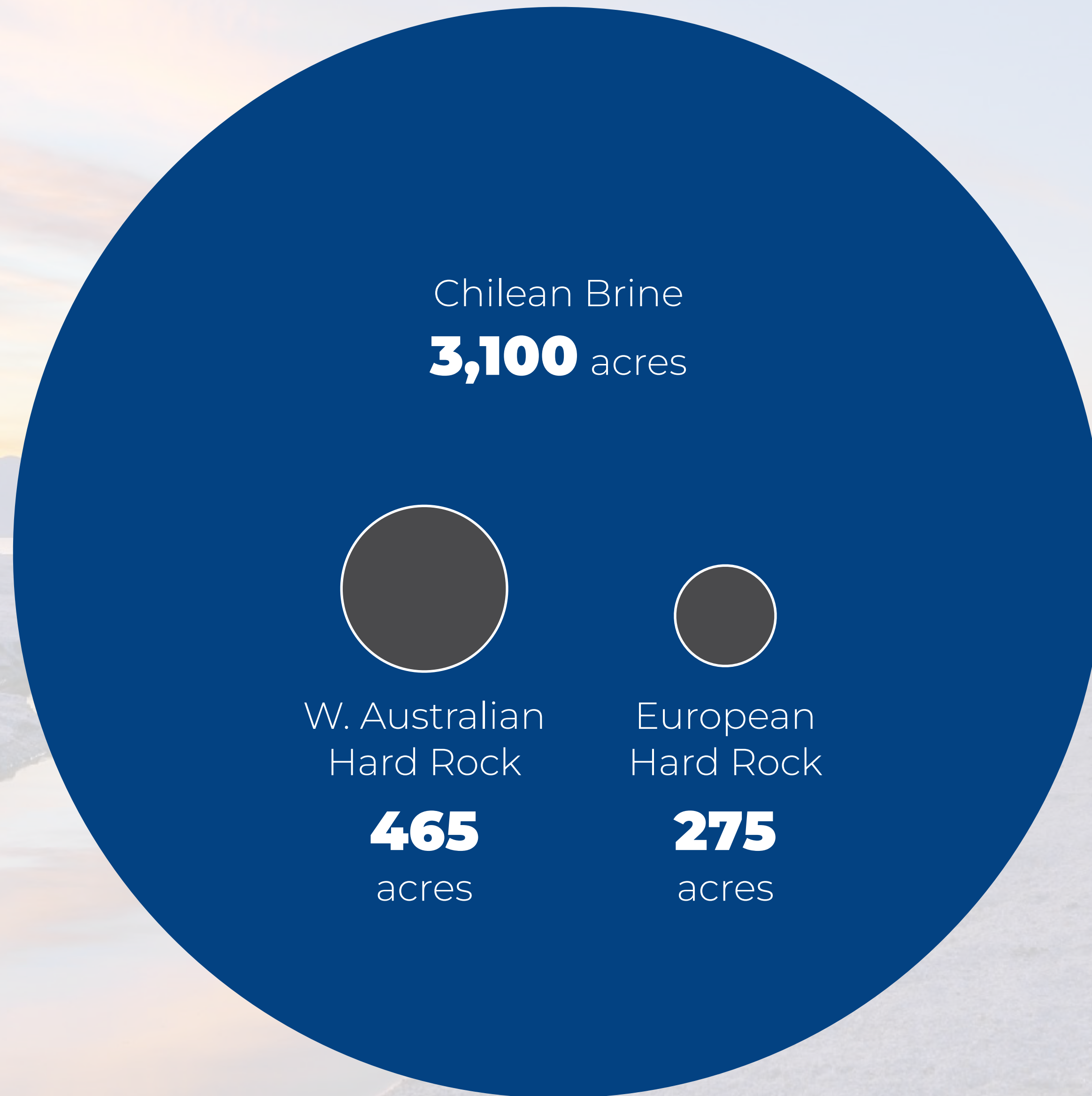
# LOW WATER USE

Lowest Water Depletion of Any Lithium Production Facility



# SMALLEST LAND USE

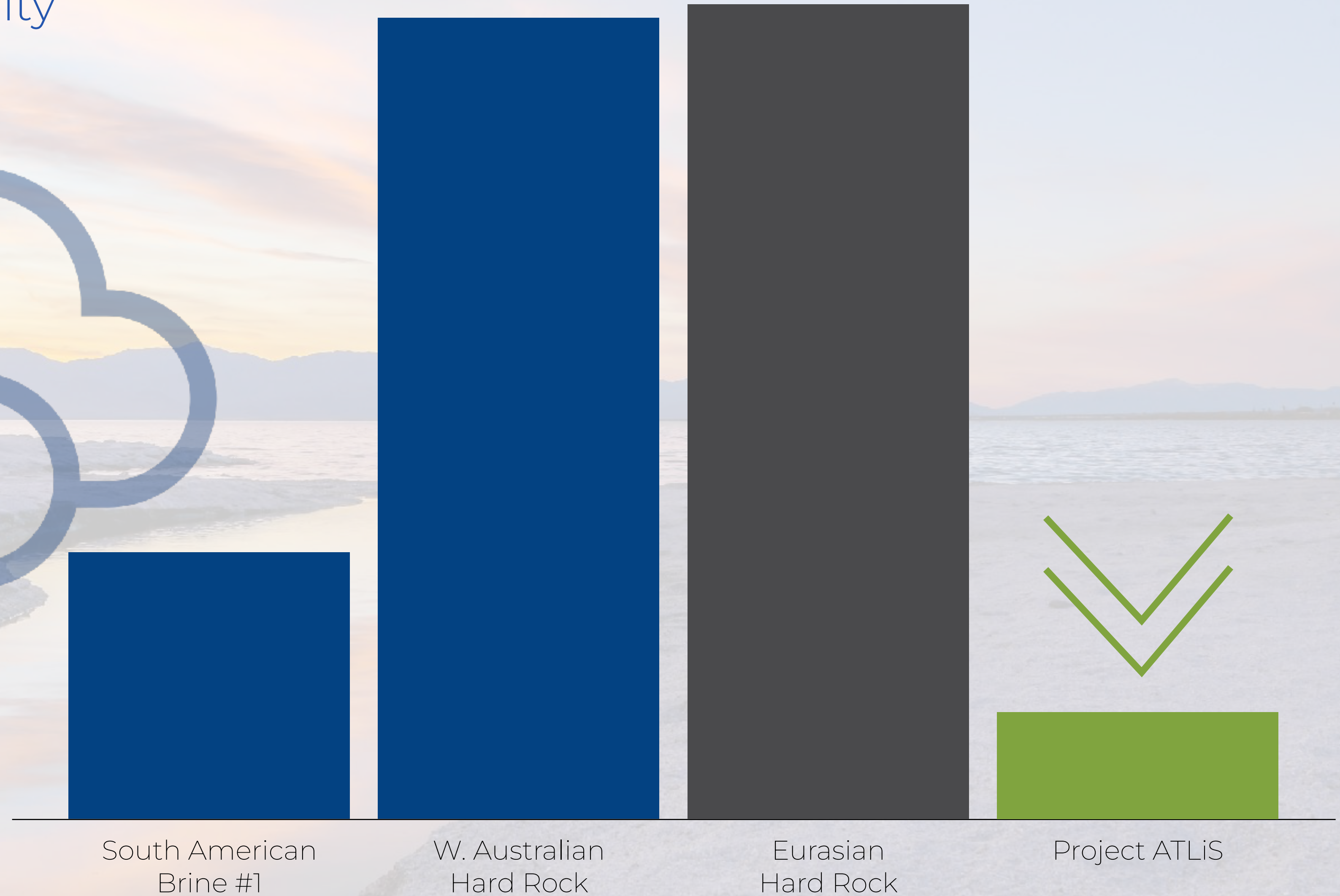
Smallest Land Use of Any  
Lithium Production Facility



**PROJECT  
ATLIS**  
**40**  
acres

# LOWEST CO2

Lowest CO2 Emissions of  
Any Lithium Production Facility

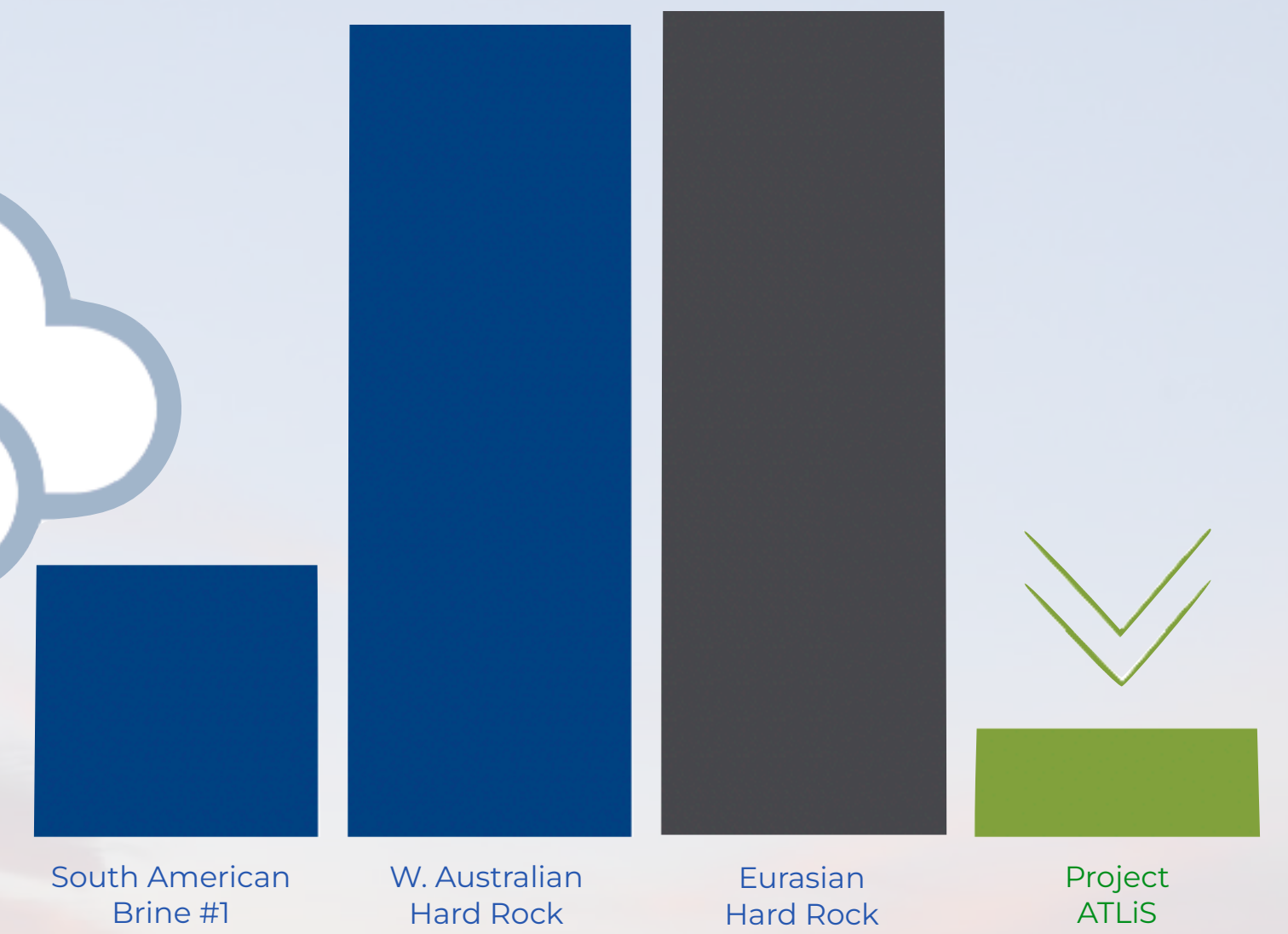




# MOST ENVIRONMENTALLY SENSITIVE



Lowest CO2 Emissions



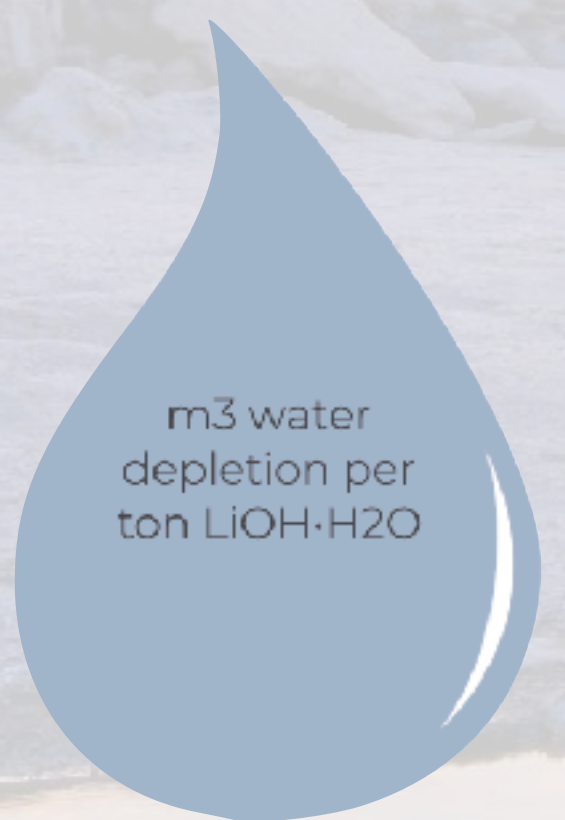
Tons CO<sub>2</sub> eq. per ton LiOH·H<sub>2</sub>O

South American Brine #1

W. Australian Hard Rock

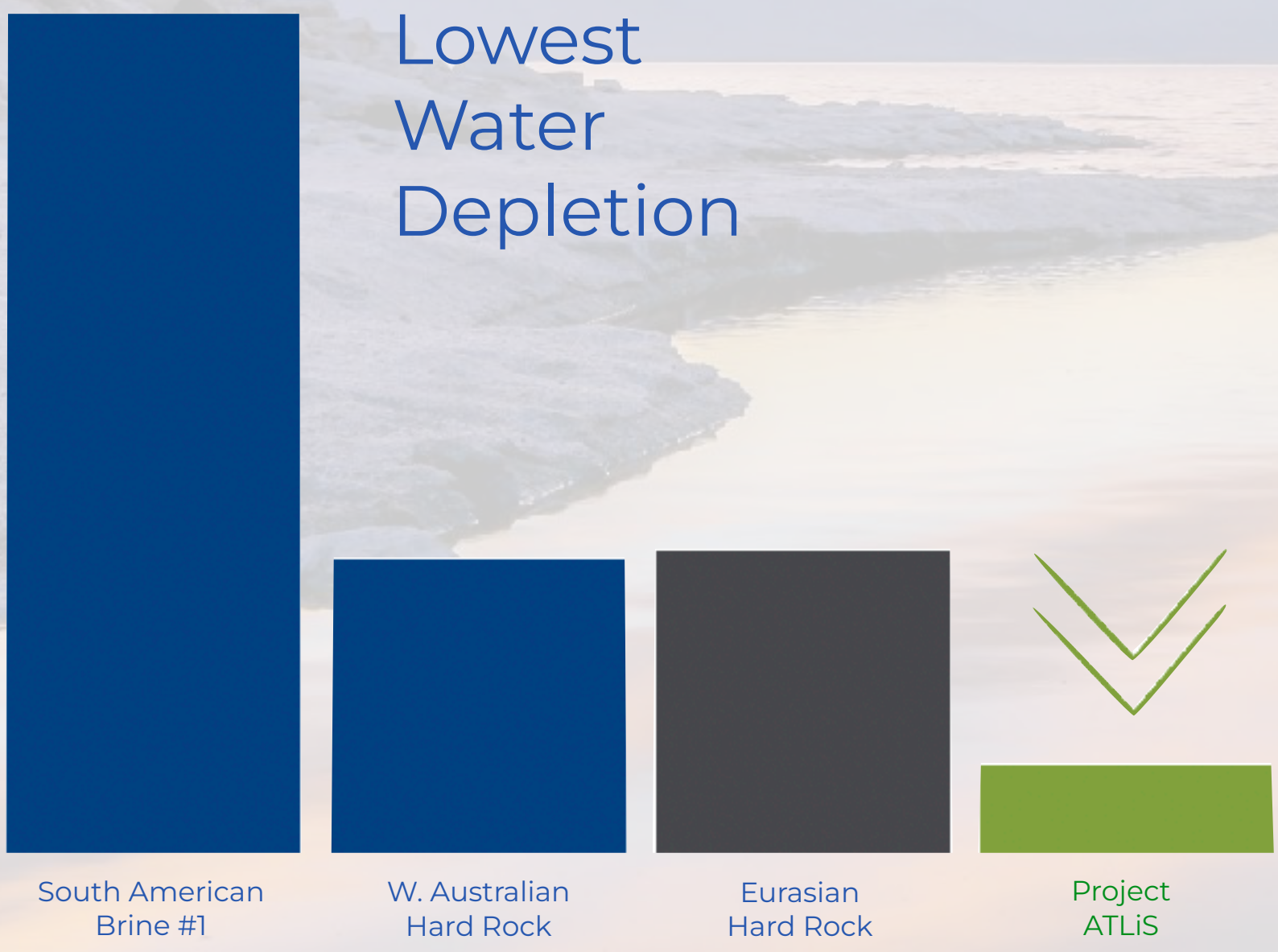
Eurasian Hard Rock

Project ATLiS



m<sup>3</sup> water depletion per ton LiOH·H<sub>2</sub>O

Lowest Water Depletion



South American Brine #1

W. Australian Hard Rock

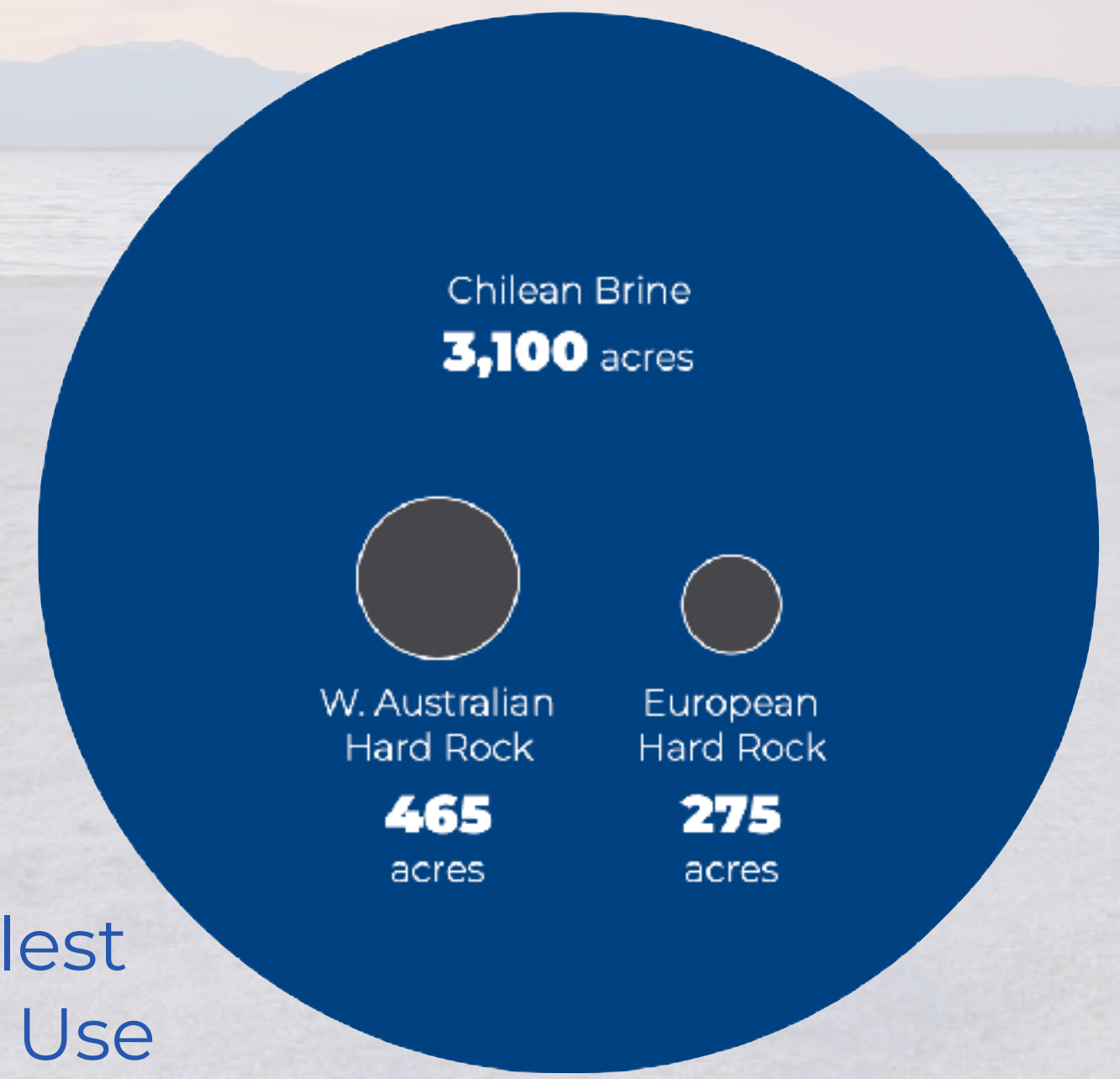
Eurasian Hard Rock

Project ATLiS



Land Use (m<sup>2</sup> per ton LiOH·H<sub>2</sub>O)

Smallest Land Use



Chilean Brine  
**3,100** acres

W. Australian Hard Rock  
**465** acres

European Hard Rock  
**275** acres

**Project ATLiS**  
**40** acres

**BENEFITS** for everyone in Imperial County

**\$720 million**

in tax revenue over 30 years of the project's operation

**\$96 million**

to Salton Sea Improvement

# **BENEFITS** for everyone in Imperial County



**220**

Total jobs (70 direct  
and 150+ indirect)

# **BENEFITS** for everyone in Imperial County



# 220

Total jobs (70 direct  
and 150+ indirect)

Prioritize local hiring

On-the-job training

Career Advancement  
Opportunities

Workforce  
Development  
Partnerships with local  
educational institutions

# **BENEFITS** for everyone in Imperial County



# \$18 million

Every year in payroll and local services



# 220

Total jobs

# **BENEFITS** for everyone in Imperial County



# \$24 million

Every year in local taxes



# 220

Total jobs



# \$18M

Every year in payroll & local services

# **BENEFITS** for everyone in Imperial County



# \$2.5 million

Local infrastructure investment



## 220

Total jobs



## \$18M

Every year in payroll & local services



## \$24M

Every year in local taxes

# **BENEFITS** for everyone in Imperial County

# **\$720 million**

in tax revenue over 30 years of the project's operation

And **\$96 million** to Salton Sea Improvement



**220**

Total jobs



**\$18M**

Every year in payroll & local services



**\$24M**

Every year in local taxes



**\$2.5M**

Local infrastructure investment

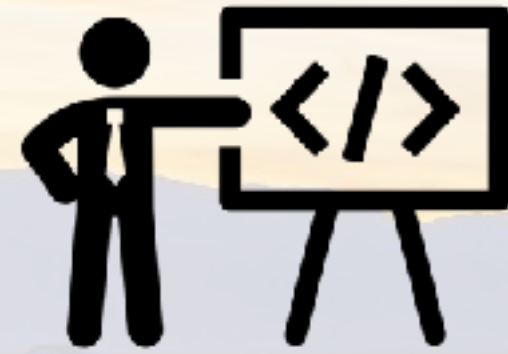


# WORKFORCE DEVELOPMENT + EDUCATION GOALS

---



**HIRE AND TRAIN LOCAL**  
Imperial Valley residents for ESM jobs.



**LOCAL WORKFORCE DEVELOPMENT**  
opportunities through partnerships.



**EDUCATE STUDENTS**  
of all ages to them to develop a passion for STEM.



**ENGAGE THE BROADER COMMUNITY**  
to listen and explain benefits, impacts and technology.



**SUPPORT ECONOMIC DEVELOPMENT**  
enabled by the lithium industry.

# HIRING LOCALLY

Our company has a record of hiring locally, and we intend to continue that practice.



## Advertise Jobs

Widespread job notices, in English and Spanish.



## On-the-job training

Career advancement and training opportunities for employees.



## Applied Training for Non-Degree Seeking Workers

Work with partners to develop skills training programs applicable to industry.

# INDUSTRY DEGREE + CERTIFICATION

Programs with Local HigherEd



Imperial Valley  
College

Worked directly with faculty to establish 3 curriculum programs to fill jobs in the industry. First students start classes this Fall (2023).



SAN DIEGO STATE  
UNIVERSITY

San Diego State University  
Brawley Campus

Directly exploring opportunities to collaborate on training courses and programs.



Paid Annual Internship  
Program

Working to establish a paid internship program tied to the local institutions to give students hands-on experience in the industry.

**Work directly with Imperial Valley College and others standing up curriculum and programs for students to learn skills needed to be competitive for jobs in the industry.**

# IMPERIAL VALLEY COLLEGE PARTNERSHIP

Working hand-in-hand with IVC to develop their  
Lithium Industry Workforce Training (LIFT) Program

**1-year certificate  
programs designed to  
provide skills and  
knowledge for the local  
workforce to excel in the  
geothermal energy and  
mineral extraction  
industries.**



**PLANT OPERATOR  
PROGRAM BEGAN IN FALL 2023**

2 Additional Programs (Instrumentation  
Technician & Chemical Lab Technician) will begin  
in Fall 2024. Reach out to IVC to learn more!

# LITHIUM CAMP

To educate students about the industry, career opportunities, technology and a clean energy future.

**Working to develop a program to take dozens of middle school students through a 1-week educational experience about lithium.**



# LITHIUM CAMP

Teacher Training

**Exploring opportunities to engage teachers to help them introduce students to the industry.**



# LITHIUM CAMP

Tours

**Exploring  
offering future  
opportunities to  
tour the Project  
ATLiS once  
operational.**



# ONGOING OUTREACH

**One-on-one and small group meetings with non-profits, community organizations, educational institutions and service groups.**





# COMMUNITY FORUMS

Hosted 2 well-attended community forums in El Centro and Calipatria. Plan for many more.



# EMAIL, PHONE + LETTER UPDATES

Regular updates to  
interested community  
members.



May 10, 2023

Hello,

As you have likely heard the buzz about the future of the lithium industry in Imperial County, I am reaching out as the CEO of one of those lithium companies, EnergySource Minerals (ESM).

My name is Eric Spomer and I want to invite you as a supporter of the industry to join us on May 22<sup>nd</sup> to learn more about our project in Calipatria - we call it Project ATLiS.

We know that many in the community are eager to learn more about the industry and how we are going to process lithium - we are just as excited to share with the community the tremendous economic and environmental benefits Project ATLiS will have for the residents of Imperial County.

As you may already know, we have had the pleasure to be part of the County community since 2012 as the developer of the John Featherstone Geothermal power plant and look forward to an even more robust future role in the community.

Our Project ATLiS (due to begin construction this year and will be operating by 2025) will create hundreds of local jobs together with creating workforce development opportunities. In addition, we will provide tens of millions of dollars for Salton Sea restoration and hundreds of millions in local tax revenue for Imperial County over the life of our project.

On May 22<sup>nd</sup>, we want to share more details of our plans, listen to your questions, get your advice and begin to work closer together to ensure our industry becomes a benefit to you and local residents for decades to come.

We are confident that our proven, tested and patented game-changing environmentally superior technology, will become a reality and deliver real local benefits for generations of Imperial County residents.

Please join us - here are the details:

**Monday, May 22<sup>nd</sup> at 6:00pm PT**  
**El Centro Library, 1198 N Imperial Ave, El Centro, CA 92243**  
*Light Refreshments and food will be available.*  
*Please RSVP on our website: [www.ESMinerals.com](http://www.ESMinerals.com)*

# WEBSITE, 1-PAGERS, BROCHURES, & PRESENTATION

Easy-to-understand materials and ways to reach out and learn more.

English and Spanish resources, advertising and translation services are critical to reach the whole community and make our outreach accessible and inclusive.

**LITHIUM. DELIVERED.**

From Imperial County.



**PROJECT ATLIS** is an approved, shovel-ready Lithium extraction project that can be deployed in Imperial County now, bringing substantial global environmental improvements and massive local benefits.